



# 2010

---

## Medium-Duty Trucks



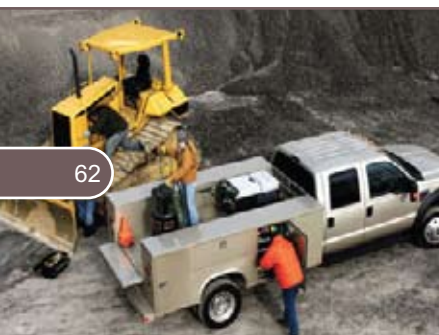
# 2010 Medium-Duty Trucks



**FORD F-650** The Super Duty F-650 is available in two models: F-650 Pro Loader™ and F-650 (Straight Frame). Standard engine is the Cummins 6.7L I6 Diesel Engine, with hp ratings from 200-325hp. Major standard features for 2010 include air conditioning, 45-gallon fuel tank, instrument panel-mounted speed control and much more. This year Ford offers these SuperDuty trucks with 14 available transmission and 10 available rear axles.

**FREIGHTLINER BUSINESS CLASS M2-SERIES** Every model of the Business Class M2 chassis features an aluminum cab, great interior room and visibility, as well as improved performance. All models come standard with the Cummins 6.7L I6 Diesel Engine, which means outstanding durability and drivability combined with excellent fuel economy and low cost of operation. There is excellent forward visibility due to sloped hood, increased windshield size, and low profile dash. The re-engineered body style features an aerodynamic hood that slopes downward for better line-of-sight. Every business class M2 features an aluminum cab with steel reinforced front wall making it strong, lightweight and rust resistant.

**HINO** High visibility, great comfort and super low noise levels - your drivers, technicians and accountants will love it. Hino offers eight models between 14,000 to 26,000 GVW. These trucks offer proven US-made driveline components on a standard 34" frame powered by Hino. Marry the efficiency and durability of the Hino engine to a first-class selection of industry-proven drivetrain components, and then attach everything to an ultra-clean, solid frame. The result is great performance from components you know and trust.



**INTERNATIONAL 4000 SERIES** These cabs provide firm, supportive seating, abundant storage and a powerful HVAC system for comfort. The 4000 Series comes with frame mounted, instead of cab mounted, components for extended cab life. Better stability, handling and a smoother ride are achieved through standard front suspension taper leaf springs and rear suspension rubber auxiliary. You get improved vehicle performance – on the road and in your business.

**ISUZU N-SERIES** Isuzu's 2010 N-Series lineup of low cab forward trucks has new features to increase driver productivity, enhance fuel economy and reduce emissions. The front suspensions, spring rates, steering and cab mount bushings have been tuned for more comfort and a better ride. A new optional limited slip differential distributes torque evenly to the wheels, an important feature for trucks driven on surfaces where loss of traction may occur. In the area of pollution control, all Isuzu diesel trucks are now 50-state "Clean Idle Certified." All N-Series diesel models incorporate a data recording module that can provide a vehicle health report showing the condition of the engine, transmission, emissions and brakes, plus fuel economy and driver operating habits. More wheelbases have been added to accommodate the widest possible range of bodies. Wheelbase choices from 109 to 212" handle bodies from 10 to 24' in length. GVWR offerings range from 12,000 lbs. to 19,500 lbs.

**MITSUBISHI FE** Mitsubishi FE models (available in three GVWRs from 12,500 – 17,995 lbs.) are the most forward-thinking medium duty commercial truck ever. Dual-caliper disc brakes with ABS are standard. Halogen headlamps and aerodynamic side mirrors offer improved visibility. And the FE's rugged, ladder-style frame has improved to make body mounting easier. FE models include a class-leading 3-year/unlimited mileage bumper-to-bumper warranty, and 5-year/175,000 mile powertrain warranty.

**MITSUBISHI FK** Mitsubishi's larger, heavier model FK, available in two GVWR's, (19,850 & 25,995 lbs.) offers an exceptionally quiet and roomy cab with many driver comfort and safety features. Outside, flush-mounted headlights, bumper air dam and 21st century styling combine to provide excellent truck/body aerodynamics. FK models are powered by a high-torque Fuso 6M60 7.5 L. in-line 243-hp, 6-cylinder turbocharged diesel, mated to a standard Allison® electronic 5-speed OD automatic transmission. FK models include a class-leading 3-year/unlimited mileage bumper to bumper warranty, and 5-year/250,000 mile powertrain warranty.

**PETERBILT 330** The Peterbilt 330 incorporates a series of design enhancements, like a one-piece, advanced composite Metton® hood, higher intensity forward lighting system and ergonomic interior upgrades. Interior features include an ergonomic dash with removable modular panels for easier servicing. The split windshield design lowers replacement costs. The lightweight, high-strength, all-aluminum cab features bulkhead style doors, lap-seam construction and huckbolt fasteners for increased durability and leak resistance for the life of your truck. However you use your truck, the 330 can be customized with a wide variety of options.



# 2010 Medium-Duty Trucks

## Model Vehicle Specifications

<b>FORD</b>	<b>Cab Type</b>	<b>Cab Style</b>	<b>Class</b>	<b>GVWR</b>
Ford F-650	Reg & Crew	Conventional	6	26,000
<b>FREIGHTLINER</b>	<b>Cab Type</b>	<b>Cab Style</b>	<b>Class</b>	<b>GVWR</b>
M2	Reg, Ext & Crew	Conventional	5 & 6	18,000 - 26,000
MT 35	Stripped Chassis	N/A	3	10,000
MT 45	Stripped Chassis	N/A	4	14,500 & 18,000
<b>HINO</b>	<b>Cab Type</b>	<b>Cab Style</b>	<b>Class</b>	<b>GVWR</b>
145	Regular	Conventional	4	14,050
165	Regular	Conventional	4	16,000
185	Regular	Conventional	5	18,000
238	Regular	Conventional	6	23,000
268	Regular	Conventional	6	25,950
<b>INTERNATIONAL</b>	<b>Cab Type</b>	<b>Cab Style</b>	<b>Class</b>	<b>GVWR</b>
4200	Reg, Ext & Crew	Conventional	5 & 6	18,000 - 26,000
4300	Reg, Ext & Crew	Conventional	6	21,000 - 26,000
4400	Reg, Ext & Crew	Conventional	6	26,000
<b>ISUZU</b>	<b>Cab Type</b>	<b>Cab Style</b>	<b>Class</b>	<b>GVWR</b>
NPR	Regular	Cab-over	3	12,000
NPR	Regular	Cab-over	3	12,000
NPR HD	Regular	Cab-over	4	14,500
NPR HD	Regular	Cab-over	4	14,500
NPR HD	Crew	Cab-over	4	14,500
NQR	Regular	Cab-over	5	17,950
NQR	Crew	Cab-over	5	17,950
NRR	Regular	Cab-over	5	19,500
FTR	Regular	Cab-over	6	25,950
<b>MITSUBISHI</b>	<b>Cab Type</b>	<b>Cab Style</b>	<b>Class</b>	<b>GVWR</b>
FE125	Regular	Cab-over	3	12,500
FE145	Regular	Cab-over	4	14,500
FE145	Crew	Cab-over	4	14,500
FE180	Regular	Cab-over	5	17,995
FK200	Regular	Cab-over	6	19,850
FK260	Regular	Cab-over	6	25,995
<b>PETERBILT</b>	<b>Cab Type</b>	<b>Cab Style</b>	<b>Class</b>	<b>GVWR</b>
Peterbilt 325	Regular	Conventional	6	19,500
Peterbilt 330	Regular	Conventional	6	26,000
<b>STERLING</b>	<b>Cab Type</b>	<b>Cab Style</b>	<b>Class</b>	<b>GVWR</b>
Acterra	Regular	Conventional	5&6	18-26,000
Bullet	Reg & Crew	Conventional	4&5	16-19,500
360	Regular	Cab-over	4&5	14,500 & 17995

Fuel Type	Standard Trans.	Optional Trans.	Body Lengths
Diesel	5spd auto	6spd man	10-26'

Fuel Type	Standard Trans.	Optional Trans.	Body Lengths
Diesel	6spd manual	5spd auto	12-26'
Diesel	5spd auto	5spd manual	10-18'
Diesel	5spd auto	5spd manual	14-22'

Fuel Type	Standard Trans.	Optional Trans.	Body Lengths
Diesel	4spd auto	N/A	12-18'
Diesel	4spd auto	N/A	12-18'
Diesel	4spd auto	N/A	12-18'
Diesel	6spd manual	5spd auto	16-26'
Diesel	6spd manual	5spd auto	16-26'

Fuel Type	Standard Trans.	Optional Trans.	Body Lengths
Diesel	6spd manual	5spd auto	10-26'
Diesel	6 spd manual	5spd auto	10-26'
Diesel	6spd manual	5spd auto	10-26'

Fuel Type	Standard Trans.	Optional Trans.	Body Lengths
Gas	6spd auto	N/A	12-16' & 20'
Diesel	6spd auto	N/A	12-16' & 20'
Gas	6spd auto	N/A	12-16' & 20'
Diesel	6spd auto	N/A	12-16' & 20'
Diesel	6spd auto	N/A	12' & 16'
Diesel	6spd auto	N/A	12-16' & 20'
Diesel	6spd auto	N/A	12' & 16'
Diesel	6spd auto	N/A	12-24'
Diesel	6spd manual	6spd auto	14-26'

Fuel Type	Standard Trans.	Optional Trans.	Body Lengths
Diesel	6spd auto	N/A	12-16'
Diesel	6spd auto	N/A	12'-20'
Diesel	6spd auto	N/A	14'
Diesel	6spd auto	N/A	14-22'
Diesel	5spd auto	6spd manual	16-22'
Diesel	5spd auto	6spd manual	16-26'

Fuel Type	Standard Trans.	Optional Trans.	Body Lengths
Diesel	6spd manual	5spd auto	10-26'
Diesel	6spd manual	5spd auto	10-26'

Fuel Type	Standard Trans.	Optional Trans.	Body Lengths
Diesel	6spd manual	5spd auto	10-26'
Diesel	6spd auto	n/a	9-16'
Diesel	6spd auto	n/a	12-20'

# 2010 Sample Fleet Lineup

MODEL TYPES	GENERAL MOTORS CORPORATION				
	BUICK	CADILLAC	CHEVROLET	GMC	PONTIAC
<b>SUB COMPACT</b>					
Base Level			Aveo LS, Aveo 5 LS		
Upgrade Level			Aveo LT, Aveo 5 LT		
<b>COMPACT</b>					
Base Level			Cobalt LS		G5
Mid-Level			Cobalt LT		Vibe
Specialty					Solstice
<b>INTERMEDIATE MODELS</b>					
Base Level			Malibu LS		G6 Base
Mid-Level			Malibu LT		
Premium Level			Malibu LTZ		
Specialty			Malibu Hybrid, HHR, HHR Panel		
<b>FULL-SIZE MODELS</b>					
Base Level	LaCrosse CX		Impala LS		
Mid-Level	LaCrosse CXL		Impala LT		
Premium Level	LaCrosse CXS		Impala LTZ		
Specialty			Camaro		
<b>LUXURY MODELS</b>					
Base Level	Lucerne CX	CTS			
Mid-Level	Lucerne CXL	DTS			
Premium Level	Lucerne CXL Special	STS	Corvette		
Specialty		CTS Sport Wagon			
<b>MINIVAN MODELS</b>					
Base Level					
Upgrade Level					
<b>SPORT-UTILITY MODELS</b>					
Compact		SRX	Equinox	Terrain	
Mid Size			Traverse	Acadia	
Full Size		Escalade (SUV, ESV)	Tahoe, Suburban	Yukon, Yukon XL	
Specialty	Enclave	Escalade Hybrid	Tahoe Hybrid	Yukon Hybrid	
<b>TRUCKS</b>					
Compact			Colorado	Canyon	
Mid Size					
Full Size		Escalade EXT	Silverado , Avalanche	Sierra	
<b>CARGO VANS</b>					
			Express	Savana	

TOYOTA	NISSAN	VOLKSWAGEN
Yaris	Versa S Versa SL	
Matrix, Corolla Base / S Corolla LE / XLE Prius	Sentra Base / S Sentra SR / SL Cube	Golf GTI, New Beetle, Golf TDI
Camry LE Camry SE Camry XLE Camry Hybrid	Altima S Altima SR Altima SL Altima Hybrid, Altima Coupe	Jetta S Jetta SE / SEL Jetta SportWagon, Jetta TDI
Avalon XL Avalon XLS Avalon Limited	Maxima S Maxima SV	Passat Passat Wagon
		EOS, CC Sport CC Luxury / VR6
Sienna CE / LE Sienna XLE		Routan S Routan SE / SEL
Rav 4, Venza 4Runner, Highlander Land Cruiser, Sequoia FJ Cruiser	Xterra, Rogue Pathfinder, Murano Armada	Tiguan Touareg 2
Tacoma Tundra	Frontier Titan	

# 2010 Sample Fleet Lineup

MODEL TYPES	FORD MOTOR COMPANY		
	FORD	LINCOLN	MERCURY
<b>SUB COMPACT</b>			
Base Level			
Upgrade Level			
<b>COMPACT</b>			
Base Level	Focus S / SE		
Mid-Level	Focus SES / SEL		
Specialty			
<b>INTERMEDIATE MODELS</b>			
Base Level	Fusion S		Milan Base
Mid-Level	Fusion SE		Milan Premier
Premium Level	Fusion SEL		
Specialty	Fusion Hybrid, Fusion Sport		Milan Hybrid
<b>FULL-SIZE MODELS</b>			
Base Level	Taurus SE		
Mid-Level	Taurus SEL		
Premium Level	Taurus Limited	MKZ	
Specialty	Taurus SHO, Mustang		
<b>LUXURY MODELS</b>			
Base Level	Crown Victoria	MKS	Grand Marquis LS
Mid-Level		Town Car	
Premium Level			
Specialty			
<b>MINIVAN MODELS</b>			
Base Level			
Upgrade Level			
<b>SPORT-UTILITY MODELS</b>			
Compact	Escape		Mariner
Mid Size	Explorer, Edge	MKX	Mountaineer
Full Size	Expedition, Expedition EL	Navigator, Navigator L	
Specialty	Flex, Escape Hybrid	MKT	Mariner Hybrid
<b>TRUCKS</b>			
Compact	Ranger		
Mid Size	Sport Trac		
Full Size	F-Series		
<b>CARGO VANS</b>			
	Transit Connect		
	Econoline		

FIAT-CHRYSLER COMPANY

CHRYSLER

DODGE

JEEP

Sebring Touring  
Sebring Ltd.

Avenger SXT  
Avenger R/T

Sebring Convertible

Caliber

300 Touring  
300 Limited  
300C

Charger SXT  
Charger R/T  
  
Challenger

Town and Country LX  
Town and Country Touring / Ltd.

Grand Caravan SE  
Grand Caravan SXT

Nitro  
Journey

Liberty, Compass, Patriot  
Grand Cherokee  
Commander  
Wrangler, Wrangler Unlimited

Dakota  
Ram

Grand Caravan Cargo  
Sprinter