



ON THE ROAD

An easy-to-digest guide to driving in Ireland

DRIVER'S CHECKLIST



Valid documentation

Driving licence and vehicle rental agreement



Warning triangle



First aid kit



Loose change for tolls

(11 in the country)



112 is the European emergency number

N-Roads = National Roads
R-Roads = Regional (minor) Roads

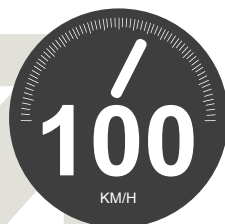


SPEED LIMITS

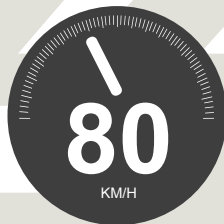
Motorways



Dual carriageways



Main roads



Built up areas



The Irish police are
known as the Garda
Síochána

DOs

✓ Always remember to drive on the left

In Ireland you drive on the left side of the road and the driver sits on the right hand side of the car.

✓ Prepare for your journey properly

There are not many service stations on motorways in Ireland.

✓ Abide by the laws of the road

Even foreign drivers can be issued with penalty points.

✓ Wear your seat belt

Children must use booster seats or an appropriate child restraint system.

✓ Research your directions and plan your route in advance

In parts of Ireland's 'Gaeltacht' areas, road signs are written only in the Irish (Gaeilge) language.

Put the heart
crossways in
someone = To
give someone a
fright

Don'ts

✘ Use your mobile phone while driving

Not only is it dangerous, but it's against the law and you could be fined up to €2,000.

✘ Many minor roads can be narrow with no 'hard shoulder'

Watch out for oncoming traffic and adverse road conditions.

✘ Drink and drive, it's a very serious offence in Ireland

The legal limit for fully licensed drivers is 0.05mg/ml in Ireland compared to 0.08mg/ml in the UK.

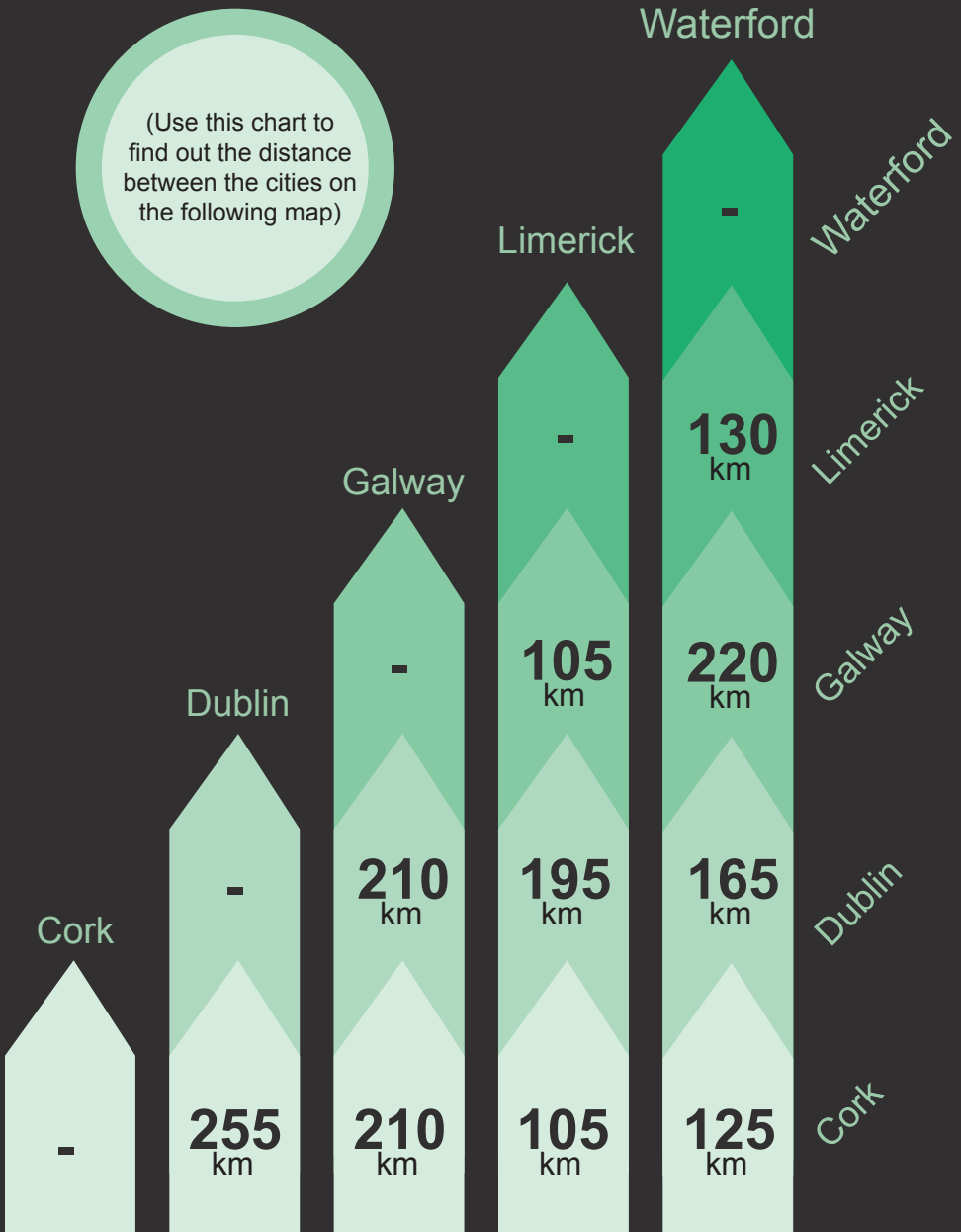
✘ Speed

Mobile speed camera detectors and police checkpoints are commonplace throughout the country.

DISTANCE CHART

Distance between popular Irish destinations

(Use this chart to find out the distance between the cities on the following map)



Disclaimer - This is only a proposed guide and not a direct reflection of driving regulations in Ireland. It is the responsibility of the driver to research and understand all driving legislation.

DISCOVER THESE PLACES

How well do you know Ireland?

The Jacks = the toilet

Arseways = something
you say when things go
wrong

Gardai = police

A stylized map of Ireland in a vibrant green color. The map is overlaid with five city icons and their names in white rounded rectangular boxes. The icons represent different cityscapes: Galway (small houses), Dublin (taller buildings), Limerick (medium houses), Waterford (taller buildings), and Cork (small houses).

Galway

Dublin

Limerick

Waterford

Cork

LIVE LIKE A LOCAL

Talk like a local



**What's the craic? =
how are you?**

**Minerals =
soft drinks**



Embrace the local traditions



**Head to the pub and experience
lively Irish bands. Remember to join
in by banging the table to the beat.**

**Keep an eye out for leprechauns – mysterious
creatures from Irish folklore. If you can catch one,
it may grant you three wishes in return for its
freedom.**



Try this for a tongue twister

An bhfacha tú an bacach, nó an bhfacha tú a mhac? Ní fhaca mé an bacach
is ní fhaca mé a mhac, ach dá bhfeicfinnse an bacach nó dá bhfeicfinnse a
mhac, ní bhacfainn leis an bacach is ní bhacfainn lena mhac!

Translation: Did you see the oaf or did you see his son? I didn't see the oaf
nor did I see his son, but if I should see the oaf or should I see his son, I'd
ignore the oaf and I'd ignore his son!